



Objectives for biological microscopes

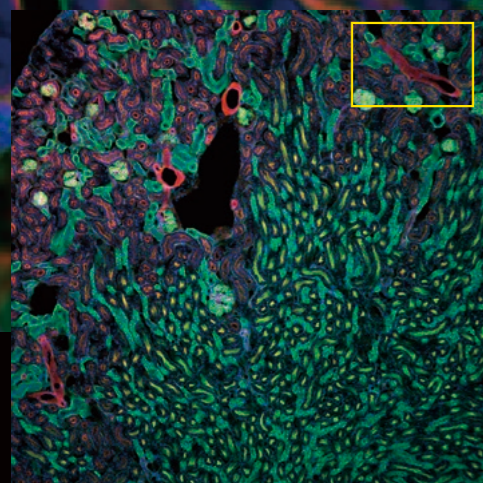
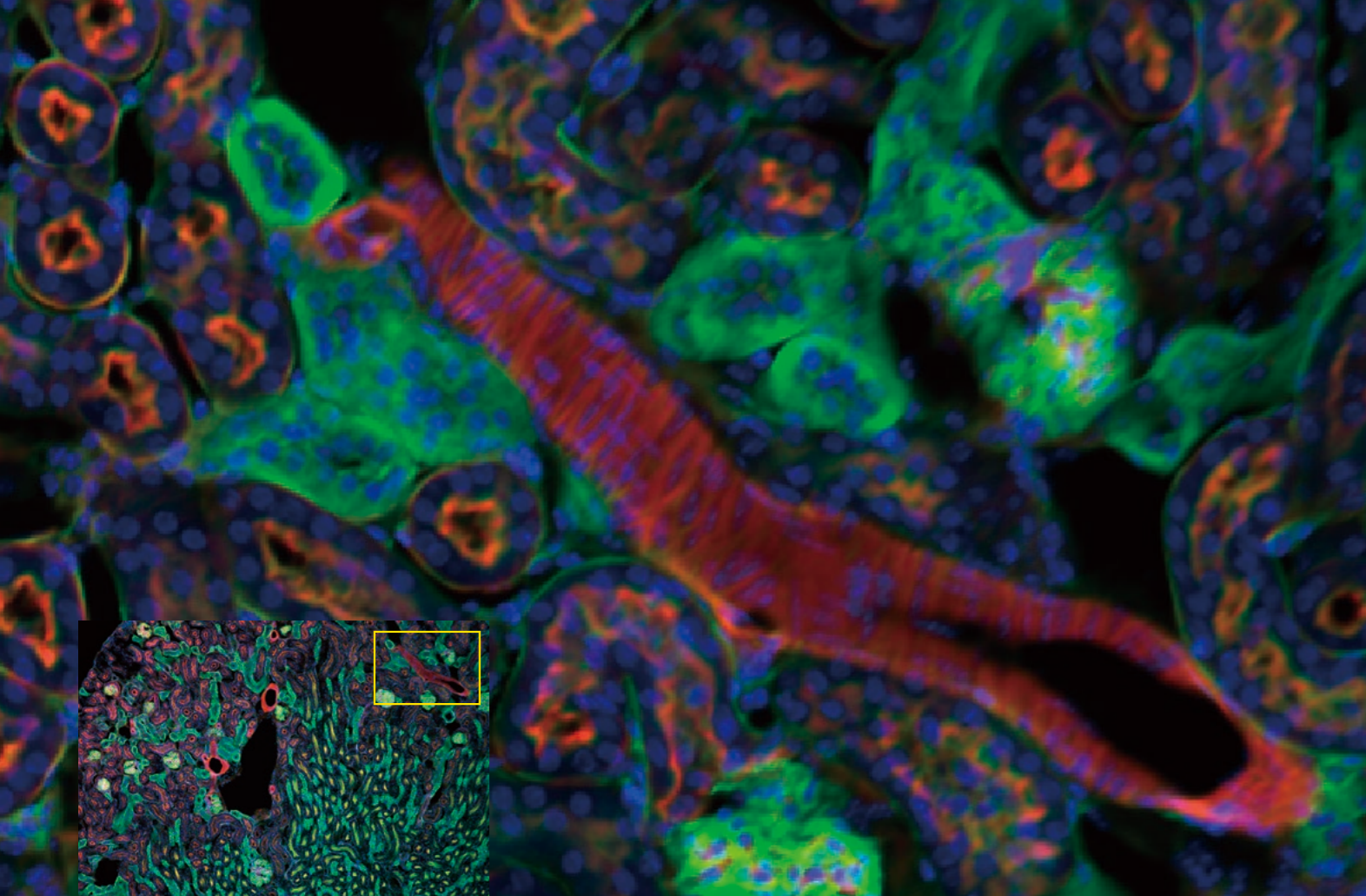
Objectives for biological microscopes

CFI Plan Apochromat

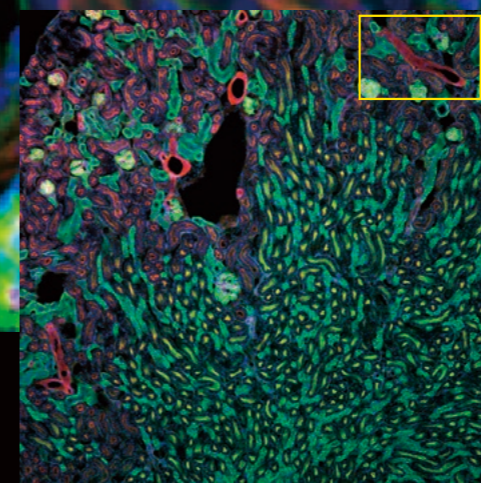
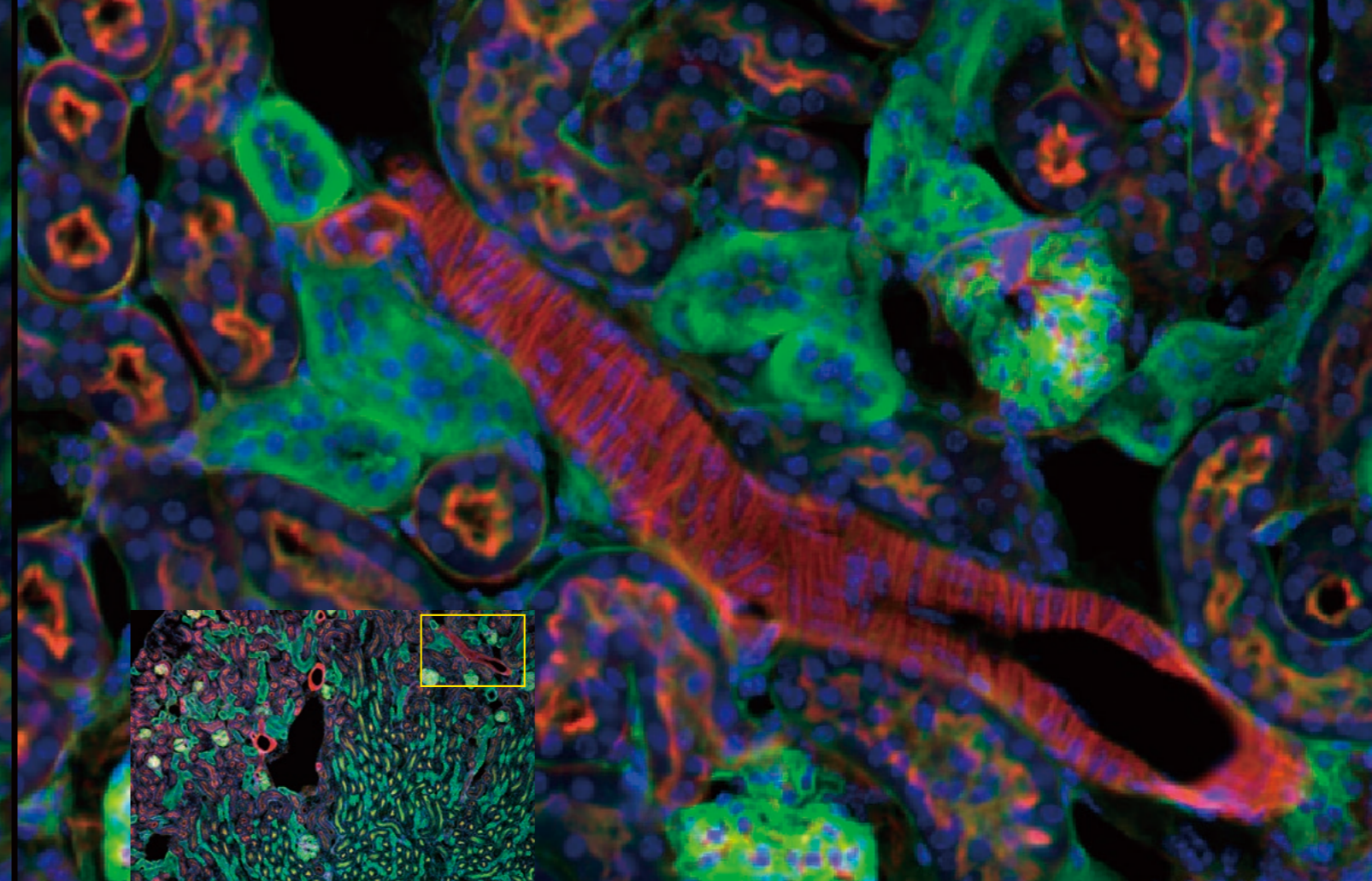
Lambda D



Shedding New Light On **MICROSCOPY**



With conventional objective



With Lambda D objective

Both the brightness and image quality at the edges of the field of view have been improved, enabling images of fibrous microstructures to be captured at high resolutions.

Capture Every Detail of Biological Phenomena

Microscopic imaging continues to rapidly evolve together with such advances in digital technology as confocal microscopes and high-sensitivity, large field-of-view CMOS cameras. The newly developed CFI Plan Apochromat Lambda D is a high-performance objective series optimized for digital solutions that are essential for future life science research.

The Lambda D series objectives deliver high image quality across the large field of view of 25 mm and chromatic aberration correction over a wide wavelength range. They improve the accuracy of quantitative analysis and realize highly reliable data acquisition.

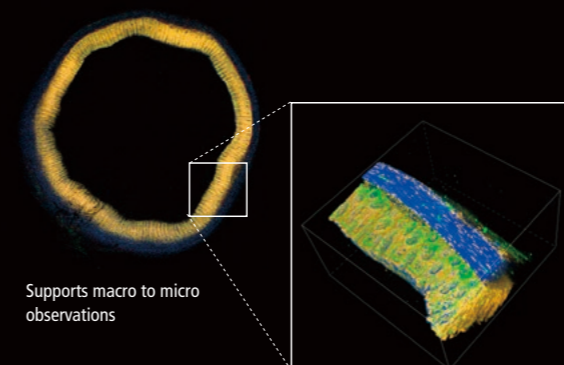


Lambda D

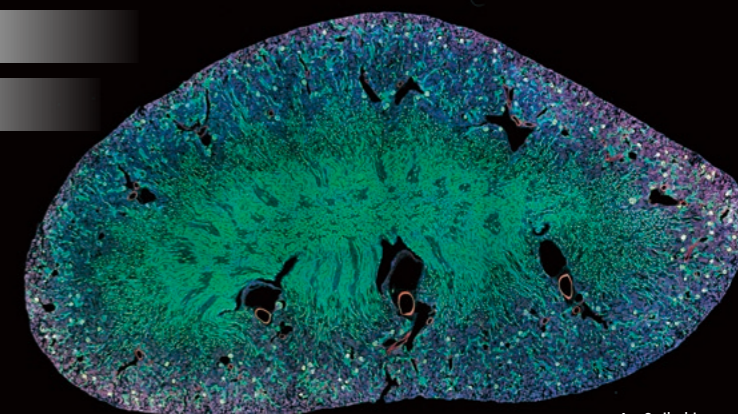
Seamless image stitching

Macro imaging of large samples

Quantitative high-content analysis



Supports macro to micro observations

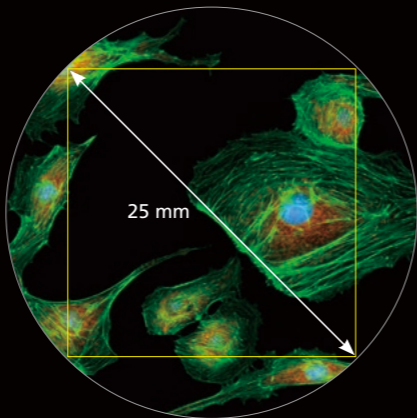


4 x 8 tiled image

Bright and Clear over a Large Field of View

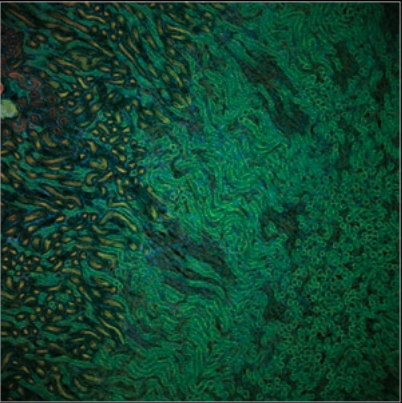
Image flatness has been improved by adopting a newly-developed high-refractive index glass and correcting field curvature in the oil immersion objectives. Bright and clear images can be obtained right up to the edge of the 25 mm field of view. This results in:

- Improvement accuracy of light intensity measurement
- Generation of seamless macro images in a short time
- Acquisition of a wide range of life phenomena with a single image
- Enhancement of high-content screening throughput

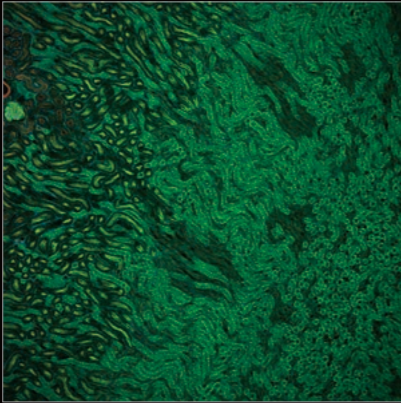


Since excellent image quality is obtained up to the edge of the 25 mm diagonal FOV, imaging throughput is improved.

Light intensity deterioration at the periphery of the field of view reduced



With conventional objective

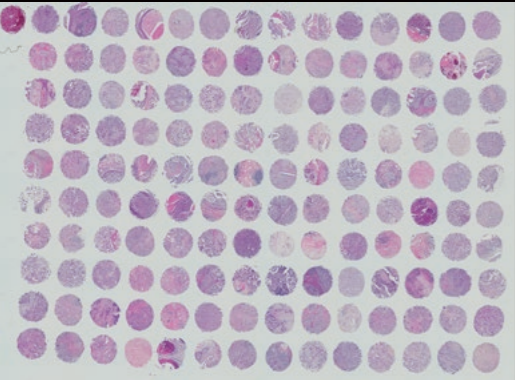


With Lambda D objective

②

Since deterioration in light intensity at the periphery of the field of view is minimal, highly reliable results can be obtained during quantitative analysis.

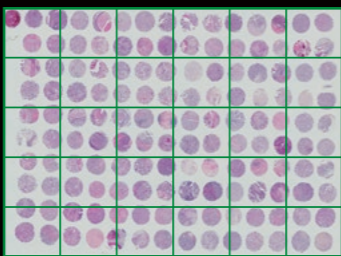
High-precision image stitching



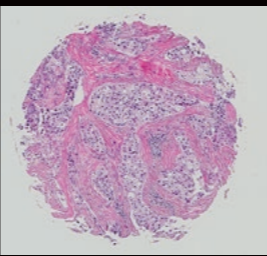
The Lambda D series can efficiently obtain high quality, seamless stitched images.

③

Large FOV enhances imaging efficiency

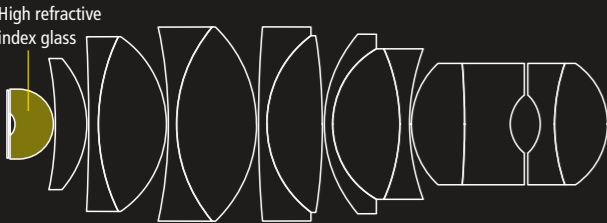


Details can be observed by switching to high magnification

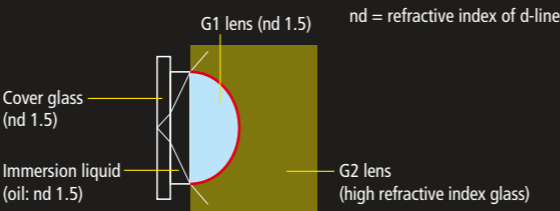


A 25 mm FOV is 30% more efficient than a 22 mm FOV because it requires less images for image stitching.

High refractive index glass achieves uniform brightness and image quality



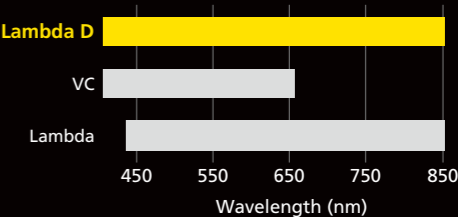
The Lambda D series employs glass with a high refractive index as the material for the front lens at the head of the oil immersion objective to correct field curvature.



By adopting glass with a higher refractive index than that of the G1 lens for the G2 lens, the Petzval sum of the entire objective is reduced, and image flatness and performance at the periphery of the field of view are improved.

Accurate Data Acquisition in All Wavelengths

ED glass (extra-low dispersion glass) has been employed as a lens material, simultaneously correcting chromatic aberration over a wide wavelength range from 405 nm to 850 nm. Since deviation of the image plane for each wavelength is imperceptible, high-precision multicolor imaging is enhanced. Highly reliable quantitative data can be obtained in light intensity measurement of nuclear stains.



The Lambda D series covers the correction range of the conventional VC and Lambda high performance objectives.

ED glass corrects chromatic aberration



Using glass with low dispersion characteristics corrects chromatic aberration from 405 nm.

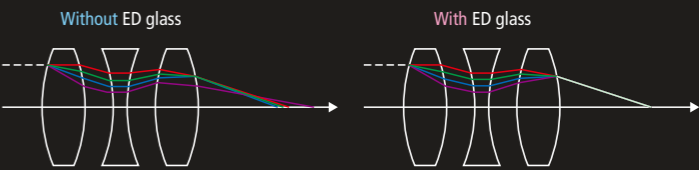
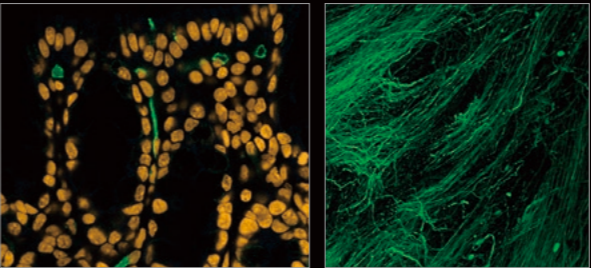


Image formation positions whose wavelengths differ can be corrected using ED glass.

The Endless Pursuit of High Resolution

Using technology that processes the edge of lens elements to the minimum thickness, Nikon has maximized the use of the light rays that pass through the periphery of the lens diameter to increase numerical aperture, delivering high resolution of fine structures.

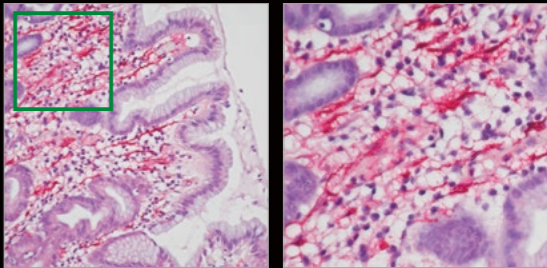
A clear fluorescent image with a high S/N ratio can be obtained.



④

⑤

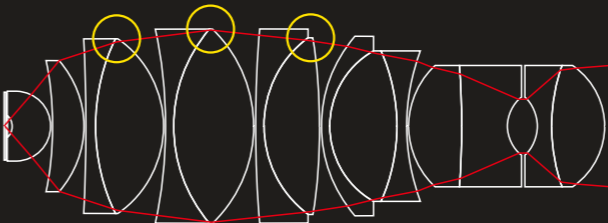
High resolution images can be captured with a large field of view.



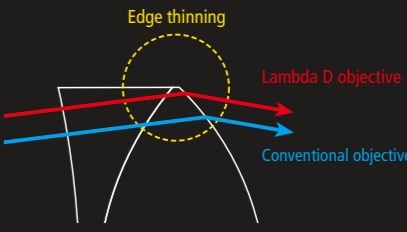
⑥

⑥

Edge thinning technology that achieves high resolution



The edge thickness of each of the lens elements is processed to be as thin as possible to expand each element's effective diameter.



By enlarging the effective diameter of the lens, light beams with larger divergence angles emitted from objects can be captured, improving the numerical aperture.

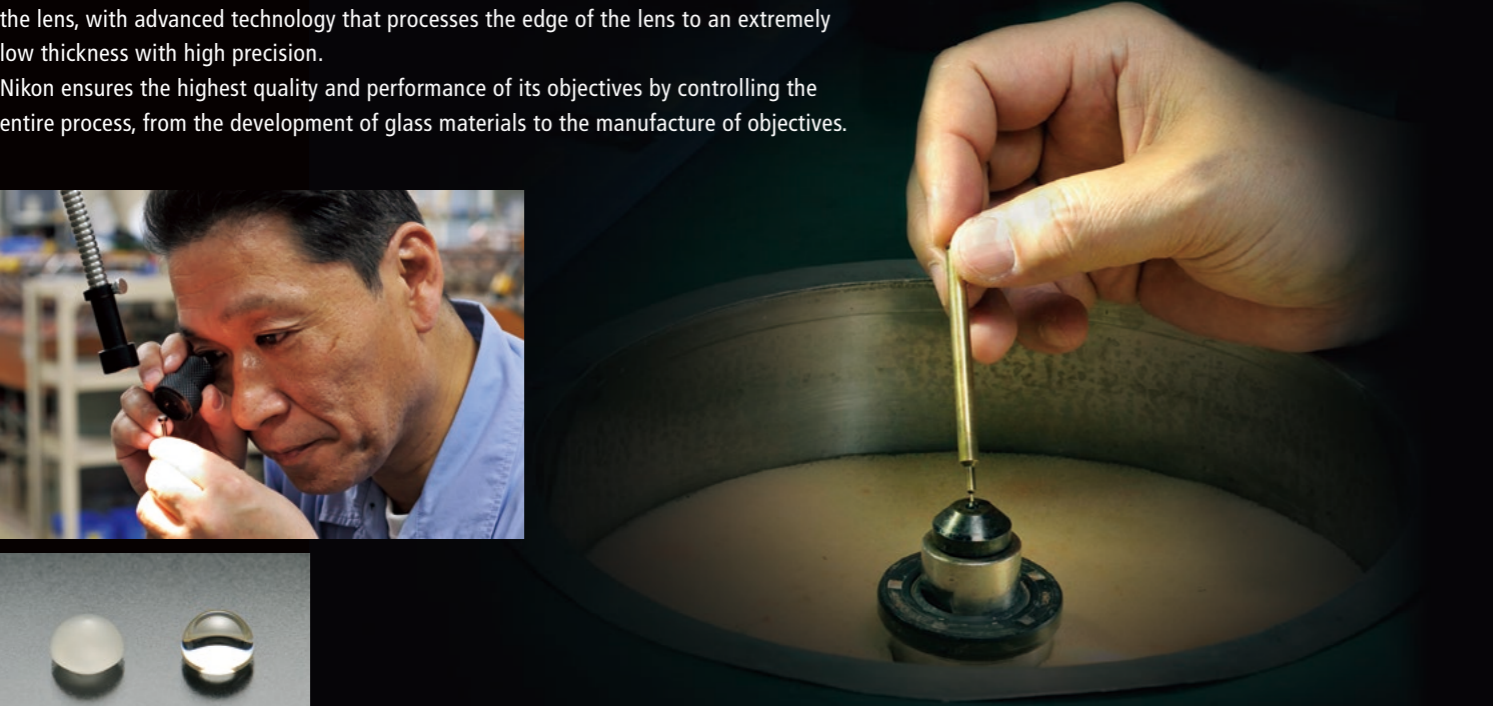
It Starts with the Glass

Nikon has been developing optical glass since its inception in 1917, and has built its own system that manufactures glass materials in-house. For this reason, Nikon can flexibly meet the developmental needs of high-performance lenses with specific refractive indices, dispersion characteristics, and transmittance. Optical glass starts as an ingot with the target refractive index, which is formed by blending glass elements and melting them. It is precision-cut, polished and coated to produce lens elements for objectives.



Mastering Excellence

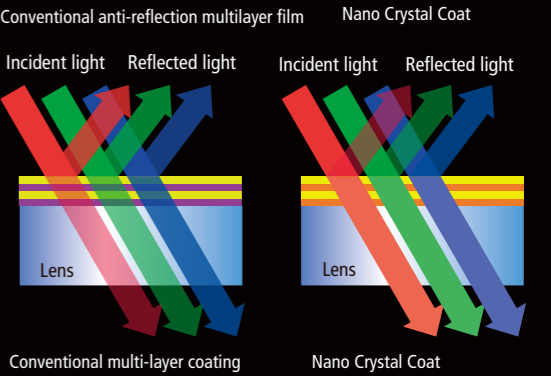
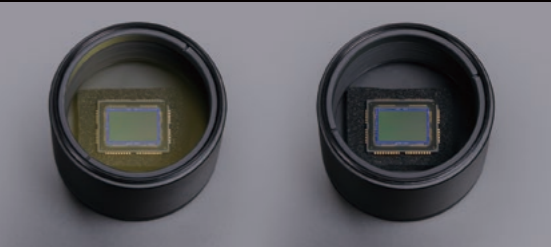
Since the front lens of a high-performance objective is very small and has a special shape, the lens is hand-polished by Nikon’s most highly skilled experts, not by a machine. Also, its numerical aperture has been improved by expanding the effective diameter of the lens, with advanced technology that processes the edge of the lens to an extremely low thickness with high precision. Nikon ensures the highest quality and performance of its objectives by controlling the entire process, from the development of glass materials to the manufacture of objectives.



Polished front lens (Right)

Anti-Reflective Nano Crystal Coat

Nano Crystal Coat is ultra-low refractive index thin film technology that applies a nanoparticle film used for the projection lens of Nikon’s semiconductor manufacturing equipment. An extremely high antireflection effect is achieved by forming a low-density film with particles of a few nanometers to a dozen nanometers. It also lowers the reflection of vertically incident light compared to conventional antireflection film, achieves extremely high transmittance in a wide wavelength range, has an unprecedented effect with respect to ghosting and flares caused by obliquely incident light.



Main specifications of Lambda D series

Product	Immersion	NA	W.D. (mm)	Cover glass thickness (mm)	Correction ring	Brightfield	Darkfield	DIC	Phase contrast	Simple polarizing	Fluorescence (405-853 nm)	Confocal (405-656 nm)
CFI Plan Apochromat Lambda D 2X		0.10	8.50	0/0.17		⊙					⊙	⊙*
CFI Plan Apochromat Lambda D 4X		0.20	20.00	0/0.17		⊙					⊙	⊙
CFI Plan Apochromat Lambda D 10X		0.45	4.00	0.17		⊙	△	⊙		⊙	⊙	⊙
CFI Plan Apochromat Lambda D 20X		0.80	0.80	0.17		⊙	⊙	⊙		⊙	⊙	⊙
CFI Plan Apochromat Lambda D 40XC		0.95	0.21	0.11~0.23	✓	⊙	⊙	⊙		⊙	⊙	⊙*
CFI Plan Apochromat Lambda D 60X Oil	Oil	1.42	0.15	0.17		⊙		⊙	★	⊙	⊙	⊙
CFI Plan Apochromat Lambda D 100X Oil	Oil	1.45	0.13	0.17		⊙		⊙	★	⊙	⊙	⊙

⊙ = Recommended for best results, △ = Possible, ★ = Compatible with Ti2 inverted microscope external phase contrast system, *: Supports 488-656 nm

Recommended System Configuration

For fluorescence imaging

Achieves high throughput even for acquisition of the large amounts of data made possible by the large field of view (25 mm).



Large field of view system

Lambda D objectives
Ti2 series inverted research microscope
Digital Sight 10 microscope camera

For pathological examination

Reliable support for examinations, with color that is faithful to the sample and high resolution.



Examination system

Lambda D objectives
Ni series upright research microscope
Digital Sight 10 microscope camera

For confocal imaging

Corrects chromatic aberrations over a wide range of wavelengths from 405 nm to near-infrared, and improves the reliability of multicolor imaging.



Confocal imaging system

Lambda D objectives
Ti2-E motorized inverted research microscope
AX confocal microscope

Sample images

- ① Mouse kidney; Label: Alexa 488 WGA, Alexa 568 Phalloidin, DAPI; Camera: DS-Qi2; Objective: CFI Plan Apochromat Lambda D 10X
- ② Mouse kidney; Label: Alexa 488 WGA, Alexa 568 Phalloidin, DAPI; Microscope: AX R; Objective: CFI Plan Apochromat Lambda D 10X
- ③ Gastric cancer cells (30 stitched images); Label: H&E staining; Camera: Digital Sight 10; Objective: CFI Plan Apochromat Lambda D 4X; Image courtesy of Nichirei Biosciences Inc.
- ④ Mouse intestine; Label: Alexa 488, Alexa 633; Microscope: AX R; Objective: CFI Plan Apochromat Lambda D 100X Oil
- ⑤ Mouse cerebral nerve (MIP); Label: GFP; Z range: 165.5 μm ; Z step: 0.147 μm ; Microscope: AX R; Objective: CFI Plan Apochromat Lambda D 100X Oil
- ⑥ Gastric parietal cells; Label: SMA antibody staining; Camera: Digital Sight 10; Objective: CFI Plan Apochromat Lambda D 40XC; Image courtesy of Nichirei Biosciences Inc.

Specifications and equipment are subject to change without any notice or obligation on the part of the manufacturer. December 2021
©2021 NIKON CORPORATION



WARNING

TO ENSURE CORRECT USAGE, READ THE CORRESPONDING MANUALS CAREFULLY BEFORE USING YOUR EQUIPMENT.

Monitor images are simulated.

Company names and product names appearing in this brochure are their registered trademarks or trademarks.

N.B. Export of the products* in this brochure is controlled under the Japanese Foreign Exchange and Foreign Trade Law.

Appropriate export procedure shall be required in case of export from Japan.

*Products: Hardware and its technical information (including software)



NIKON CORPORATION

Shinagawa Intercity Tower C, 2-15-3, Konan, Minato-ku, Tokyo 108-6290, Japan
phone: +81-3-6433-3705 fax: +81-3-6433-3785
<https://www.healthcare.nikon.com/en/>

ISO 14001 Certified
for NIKON CORPORATION



Nikon Instruments Inc.

1300 Walt Whitman Road, Melville, N.Y. 11747-3064, U.S.A.
phone: +1-631-547-8500; +1-800-52-NIKON (within the U.S.A. only)
fax: +1-631-547-0299
<https://www.microscope.healthcare.nikon.com/>

Nikon Europe B.V.

Tripolis 100, Burgerweeshuispad 101, 1076 ER Amsterdam, Netherlands
phone: +31-20-7099-000 fax: +31-20-7099-298
https://www.microscope.healthcare.nikon.com/en_EU/

Nikon Instruments (Shanghai) Co., Ltd.

CHINA phone: +86-21-6841-2050 fax: +86-21-6841-2060
(Beijing branch) phone: +86-10-5831-2028 fax: +86-10-5831-2026
(Guangzhou branch) phone: +86-2-3882-0551 fax: +86-2-3882-0580
https://www.microscope.healthcare.nikon.com/zh_CN/

Nikon Canada Inc.

CANADA phone: +1-905-625-9910 fax: +1-905-602-9953

Nikon France, Succursale de Nikon Europe B.V.

FRANCE phone: +33-1-4516-4516 fax: +33-1-4516-4505

Nikon Deutschland, Zweigniederlassung der Nikon Europe B.V.

GERMANY phone: +49-211-9414-888 fax: +49-211-9414-322

Nikon Italy, Branch of Nikon Europe B.V.

ITALY phone: +39-055-300-9601 fax: +39-055-300-993

Nikon Europe B.V., Amsterdam, Zweigniederlassung Schweiz (Egg/ZH)

SWITZERLAND phone: +41-43-277-2867 fax: +41-43-277-2861

Nikon UK, Branch of Nikon Europe B.V.

UNITED KINGDOM phone: +44-208-247-1717 fax: +44-208-541-4584

Nikon Österreich, Zweigniederlassung der Nikon Europe B.V.

AUSTRIA phone: +43-1-972-6111 fax: +43-1-972-6111-40

Nikon Singapore Pte Ltd

SINGAPORE phone: +65-6559-3651 fax: +65-6559-3668

Nikon Australia Pty Ltd

AUSTRALIA phone: +61-2-8767-6900

Nikon Instruments Korea Co., Ltd.

KOREA phone: +82-2-6288-1900 fax: +82-2-555-4415