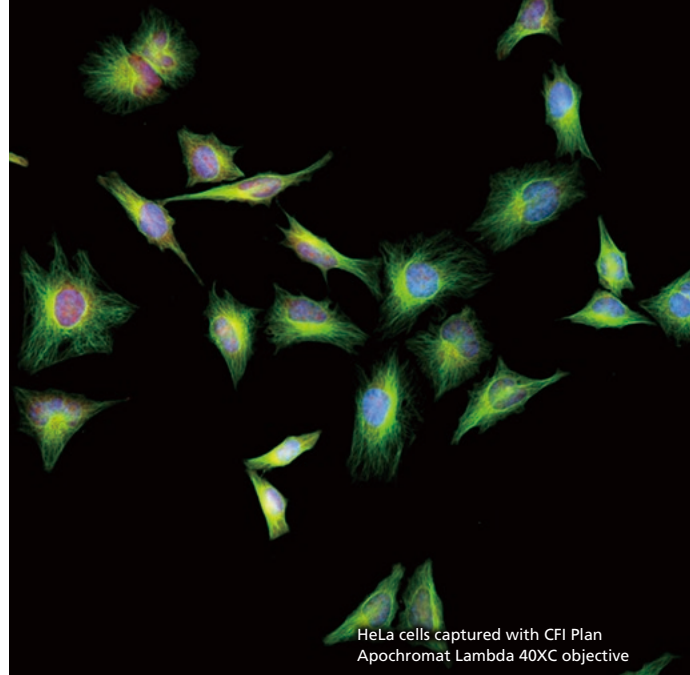




## New LED light source suitable for fluorescence observation



HeLa cells captured with CFI Plan Apochromat Lambda 40XC objective

# D-LEDI

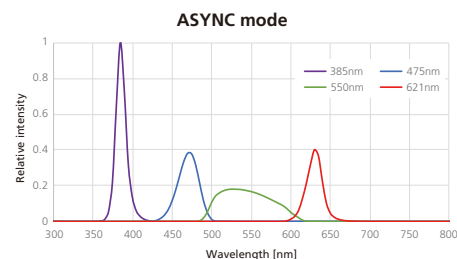
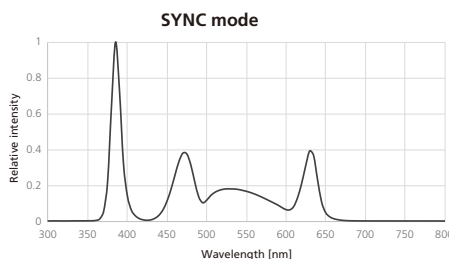
Fluorescence LED Illumination system

### Highly efficient and bright fluorescent LED illumination

The D-LEDI can be attached directly to a fluorescent device, preventing the loss of light intensity the normally occurs with fiber-optic light sources.

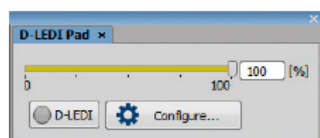
### Wavelength intensity control

- Equipped with four types of LEDs (385 nm, 475 nm, 550 nm and 621 nm).
- Using the included controller, the user can simultaneously turn the lights of individual, multiple, or all wavelengths on or off.

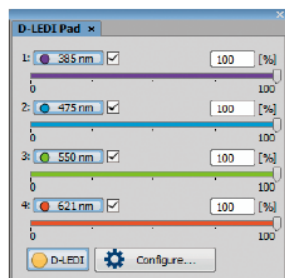


### Control using NIS-Elements software

- The light intensity of each wavelength can be controlled while maintaining wavelength intensity ratios.
- The emission of excitation light can be synchronized with image acquisition, which is effective for time-lapse imaging.



Simultaneous lighting



Individual light adjustment

### Maintenance-free

The built-in LEDs have a long life of approximately 20,000 hours, eliminating the need for frequent lamp replacement, which was required when using a mercury lamp light source.

### Alignment free

The LEDs of this light source are rigorously adjusted during manufacture, and do not require the centering process that was required with a mercury lamp light source.

## Change your microscope to an LED model

The D-LEDI fluorescence LED illumination system can be easily attached to the fluorescent device of your current Nikon ECLIPSE Ni-E, Ni-U, Ci-E, Ci-S, Ci-L and FN1 microscopes using the D-LEDI Retrofit Adapter.

## D-LEDI Retrofit Adapter

As well as current Nikon fluorescence microscopes, the discontinued ECLIPSE Ti, 90i, 80i, 55i and 50i microscopes are also compatible with this light source using the D-LEDI Retrofit Adapter. Please contact your nearest dealer for details.



D-LEDI Retrofit Adapter

### Required components

ECLIPSE Ni-E / Ni-U

ECLIPSE FN1

ECLIPSE Ci-E / Ci-L / Ci-S

ECLIPSE Ti2-E / Ti2-A

ECLIPSE Ti2-U

ECLIPSE Ts2R-FL

NI-FLEI-2 Epi-Fluorescence Attachment

CI-FL-2 Epi-Fluorescence Attachment

D-LEDI Ti2 connection cable

Ti2-LA-FL-2 FL Module

TS2R-F-AFL-2 D-LEDI Adapter

USB cable

Imaging software  
NIS-Elements AR/BR/D  
(Version 5.30 or later)

D-LEDI Fluorescence LED  
Illumination system



Attached to Ni-U



Attached to Ti2-U

N.B. Export of the products\* in this brochure is controlled under the Japanese Foreign Exchange and Foreign Trade Law. Appropriate export procedure shall be required in case of export from Japan.  
\*Products: Hardware and its technical information (including software)



**WARNING**

TO ENSURE CORRECT USAGE, READ THE CORRESPONDING  
MANUALS CAREFULLY BEFORE USING YOUR EQUIPMENT.

Specifications and equipment are subject to change without any notice or obligation on the part of the manufacturer. February 2021 ©2021 NIKON CORPORATION



### NIKON CORPORATION

Shinagawa Intercity Tower C, 2-15-3, Konan, Minato-ku, Tokyo 108-6290, Japan  
phone: +81-3-6433-3705 fax: +81-3-6433-3785  
<https://www.healthcare.nikon.com/en/>

ISO 14001 Certified  
for NIKON CORPORATION

### NIKON INSTRUMENTS (SHANGHAI) CO., LTD.

CHINA phone: +86-21-6841-2050 fax: +86-21-6841-2060  
(Beijing branch) phone: +86-10-5831-2028 fax: +86-10-5831-2026  
(Guangzhou branch) phone: +86-2-3882-0551 fax: +86-2-3882-0580  
[https://www.microscope.healthcare.nikon.com/zh\\_CN/](https://www.microscope.healthcare.nikon.com/zh_CN/)

### NIKON SINGAPORE PTE LTD

SINGAPORE phone: +65-6559-3651 fax: +65-6559-3668  
[https://www.microscope.healthcare.nikon.com/en\\_AOM/](https://www.microscope.healthcare.nikon.com/en_AOM/)

### NIKON INSTRUMENTS KOREA CO., LTD.

KOREA phone: +82-2-6288-1900 fax: +82-2-555-4415  
[https://www.microscope.healthcare.nikon.com/ko\\_KR/](https://www.microscope.healthcare.nikon.com/ko_KR/)